



Professional Solar Mounting Supplier

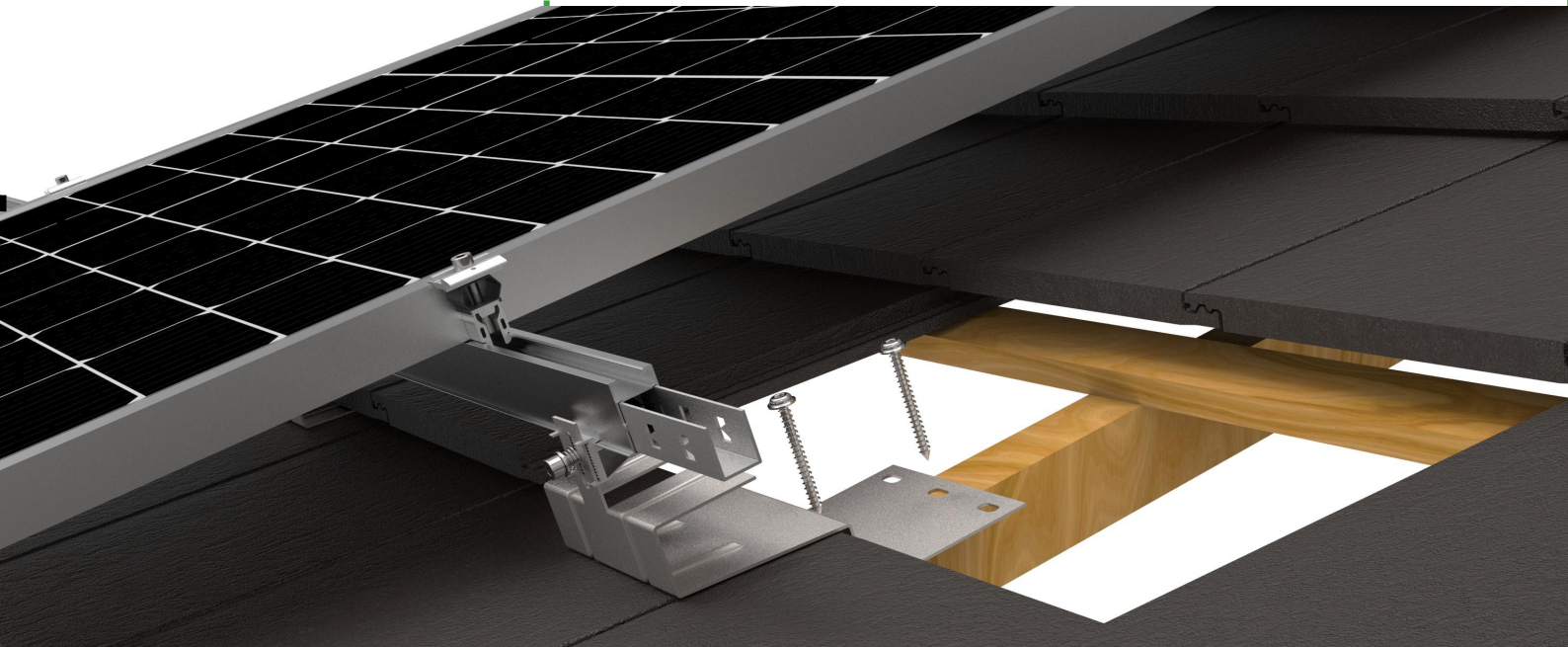


CONTENTS

Tile roof mounting system	1
Flat tile system LV-T081.....	2
Curved tile system LV-T082.....	3
Plain tile system LV-T083.....	4
Metal roof mounting system	5
Mini rail system LV-M0711.....	6
Mini rail system LV-M0712.....	7
Rail free system LV-M072.....	8
Rail system LV-M073.....	9
Rail system LV-M074.....	10
Flat roof mounting system	11
Z-bracket system LV-F061.....	12
Tripod system LV-F0621.....	13
Tripod system LV-F0622.....	14
Tripod system LV-F0623.....	15
Tripod system LV-F0624.....	16
Adjustable system LV-F063.....	17
S& EW system LV-F064.....	18
Balcony mounting system LV-B09.....	19
Ground mounting system	20
LV-G01.....	21
LV-G03.....	21
LV-G15.....	21
LV-G05.....	21
LV-G013-1.....	22
LV-G013-2.....	22
Roof mounting accessories	23
Solar Mounting rails & Rail splices.....	23
Solar Panel clamps.....	24
Tile roof hook.....	26
Mini rail.....	30
Sheet metal seam clamp.....	31
Hanger bolt for wood substructure.....	35
Drill screw for steel substructure.....	36
Bolts and screws.....	36
Accessories.....	38



Tile roof mounting system



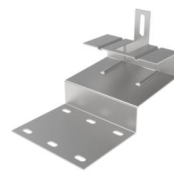
- **Application:** Flat roof tiles
- **Material:** SS304, Aluminum6005-T5
- **Module orientation:** Portrait
- **Module thickness:** 30~40mm
- **Roof slop:** Up to 60°
- **Module type:** Framed
- **System size:** Customized
- **Wind load:** 50m/s
- **Warranty:** 10 years



Mounting Rail



Rail connector



Tile roof hook



Rail fastener



Mid clamp



End clamp

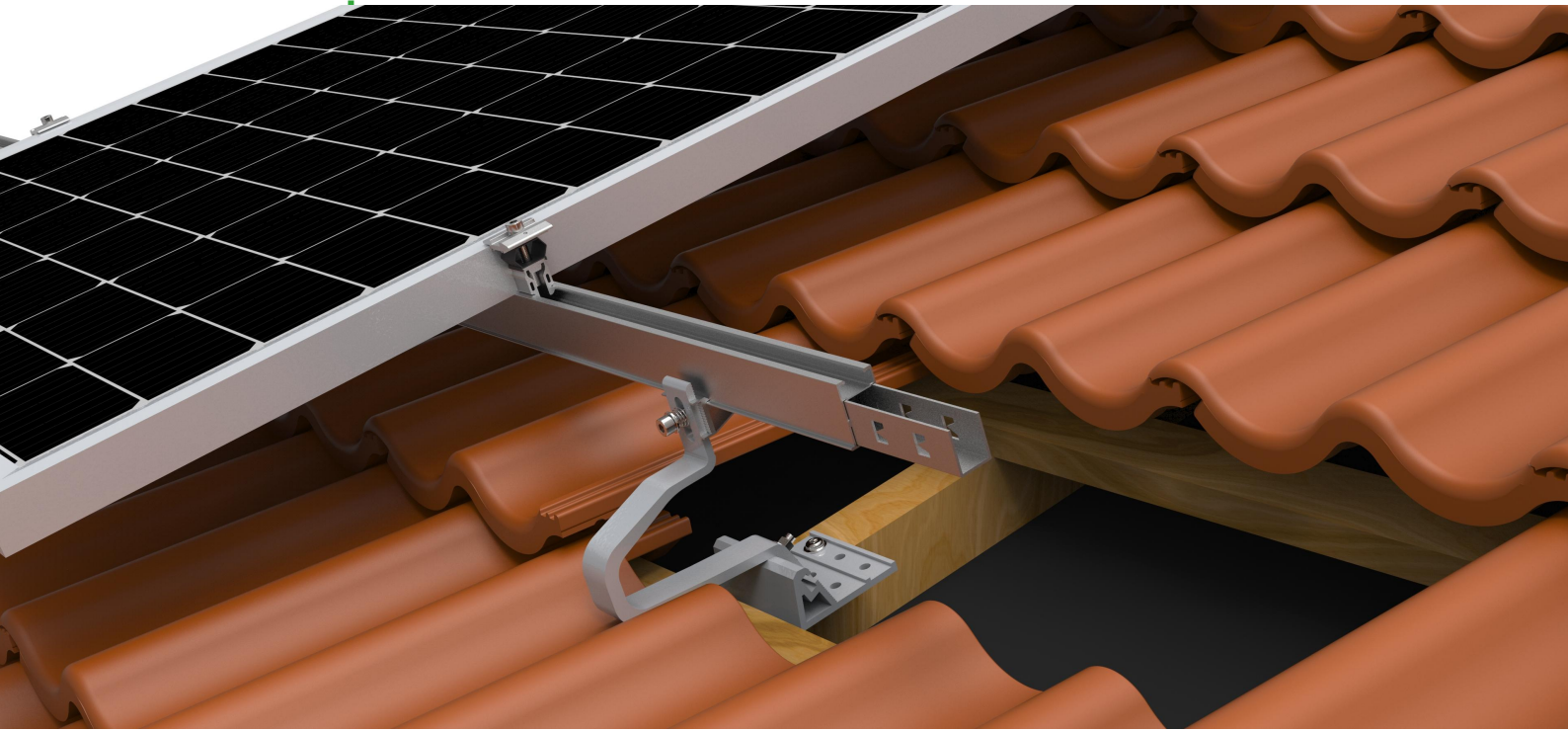


Wooden Screws



Ground lug

Curved tile system LV-T082



Mounting Rail



Aluminum Tile roof



Rail connector



Rail fastener



Ground lug



Mid clamp

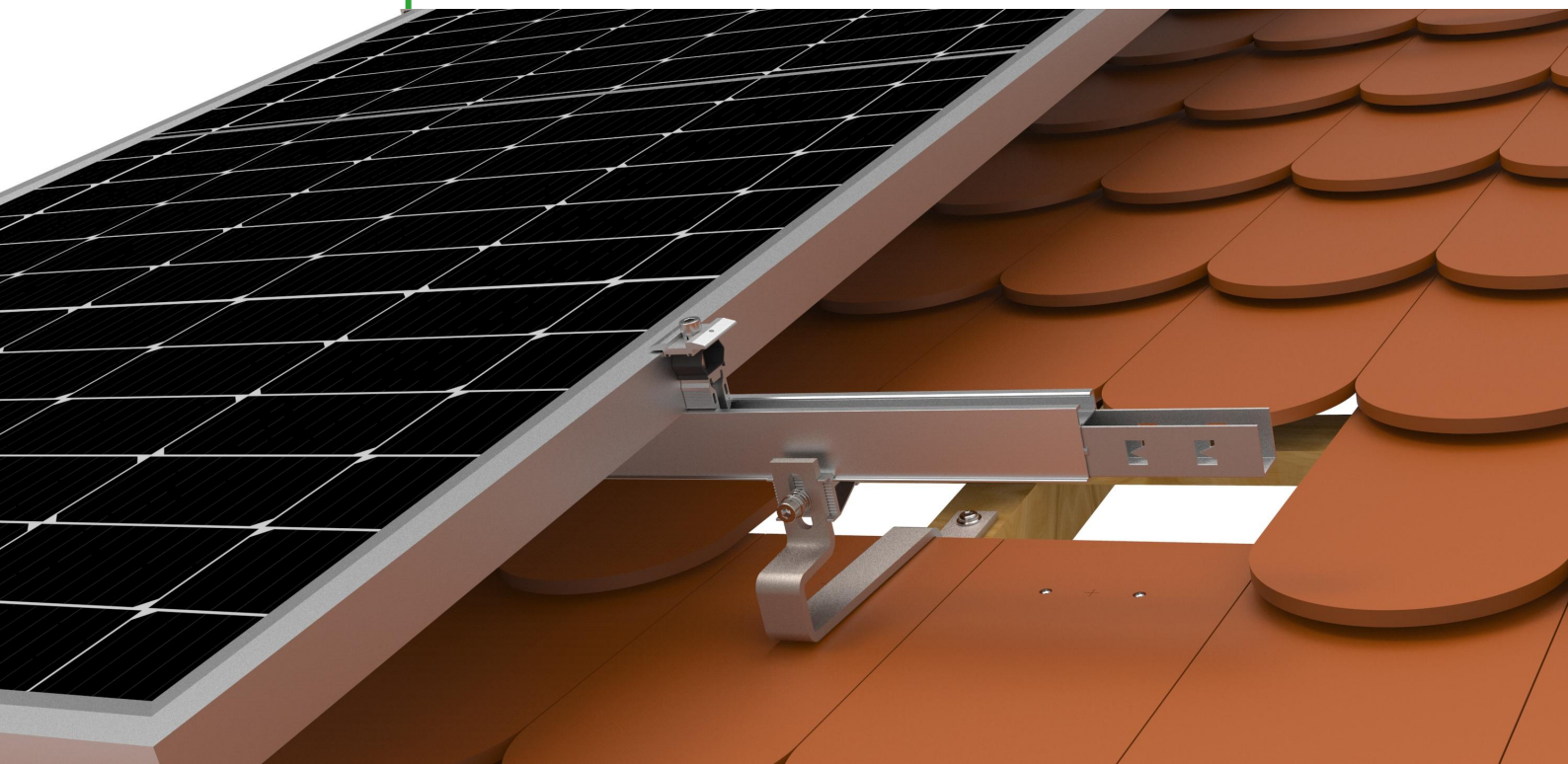


End clamp



Wooden Screw

- **Application:** clay tile roof
- **Material:** SS304, Aluminum6005-T5
- **Module orientation:** Portrait
- **Module thickness:** 30~40mm
- **Roof slop:** Up to 60°
- **Module type:** Framed
- **System size:** customized
- **Wind load:** 50m/s
- **Warranty:** 10 years
- **Service life:** 25 years



- **Application:** Plain Tile roof
- **Material:** SS304, Aluminum6005-T5
- **Module orientation:** Portrait
- **Module thickness:** 30~40mm
- **Roof slop:** Up to 60°
- **Module type:** Framed
- **System size:** customized
- **Wind load :** 50m/s
- **Warranty:** 10 years
- **Service life:** 25 years



Mounting Rail



Tile roof hook



Rail connector



Rail fastener



Ground lug



Mid clamp



End clamp

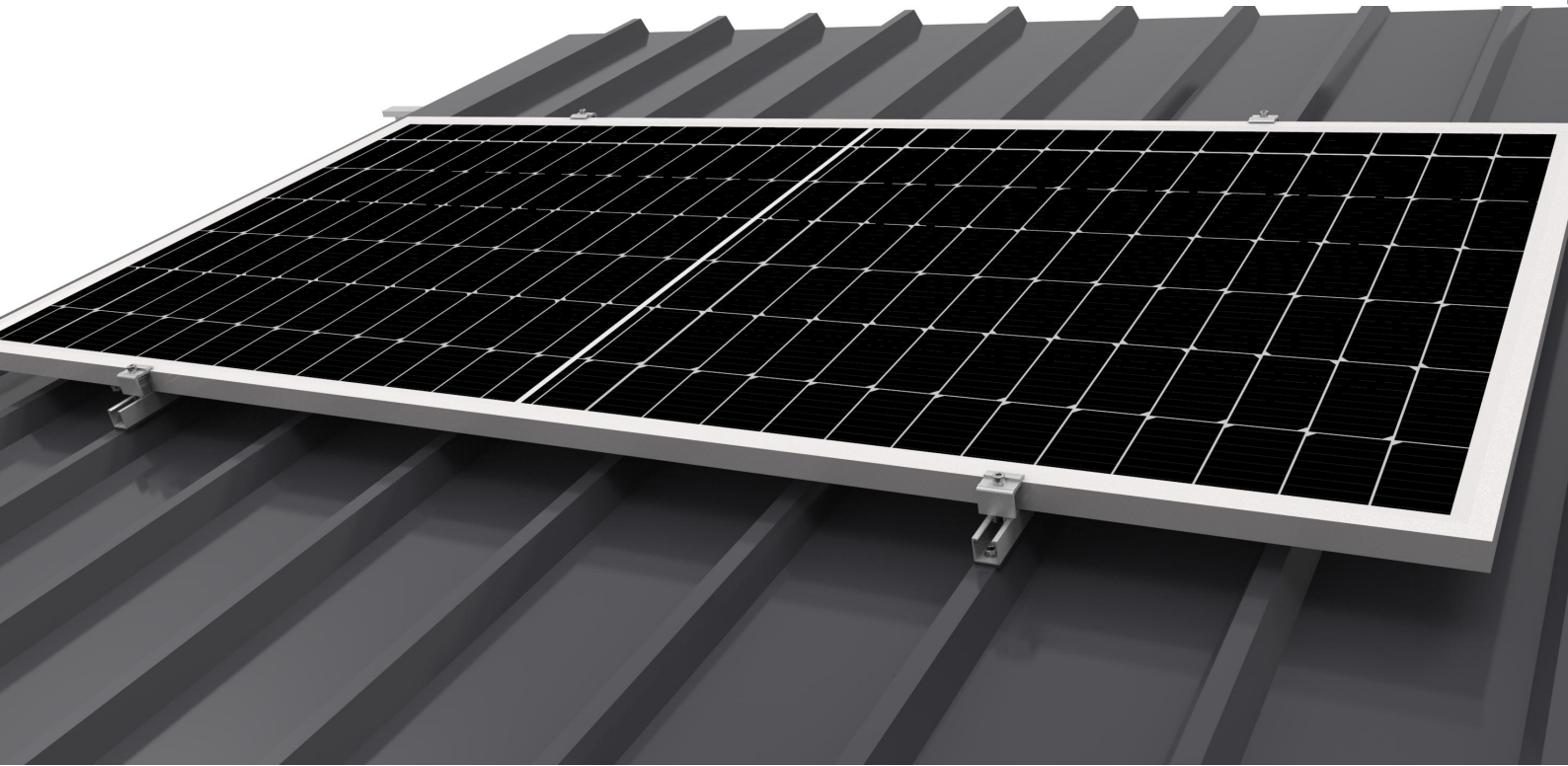


Wooden Screw



Metal roof mounting system

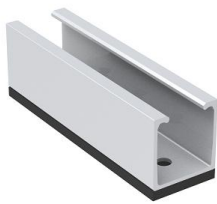
Mini rail system LV-M0711



Ground lug



Screw ST5.5*25



Mini rail



Middle clamp



End clamp

- **Application:**
Trapezoidal metal roof
- **Material:** Aluminum6005-T5, SS304
- **Module orientation:** Landscape
- **Module thickness:** 30~40mm
- **Module type:** Framed modules
- **Building height:** 25 m max.
- **Roof inclination:** 35° max.
- **Wind load:** 45m/s
- **Service life:** 25years
- **Warranty years:** 10 years

Mini rail system LV-M0712



- **Application:**
Trapezoidal or corrugated metal roof
- **Material:** Aluminum6005-T5, SS304
- **Module orientation:** Portrait
- **Module thickness:** 30~40mm
- **Module type:** Framed modules
- **Roof inclination:** 5° max.
- **Wind load:** 45m/s
- **Service life:** 25years
- **Warranty years:** 10 years



Ground lug



Screw ST5.5*25



Mini rail



Middle clamp



End clamp

Rail free system LV-M072



Roof clamp



Ground lug



Middle clamp



End clamp

- **Application:**
Sanding seam metal roof
- **Material:** Aluminum6005-T5, SS304
- **Module orientation:** Vertical
- **Module thickness:** 30~40mm
- **Module type:** Framed modules
- **Roof inclination:** 5° max.
- **Wind load:** 45m/s
- **Service life:** 25years
- **Warranty years:** 10 years

Rail system LV-M073



- **Application:**
Trapezoidal or corrugated metal roof
- **Material:** Aluminum6005-T5, SS304
- **Module orientation:** Portrait
- **Module thickness:** 30~40mm
- **Module type:** Framed modules
- **Roof inclination:** 5° max.
- **Wind load:** 60m/s
- **Service life:** 25years
- **Warranty years:** 10 years



Mounting Rail



Rail connector



Hunger bolt fastener



Ground lug

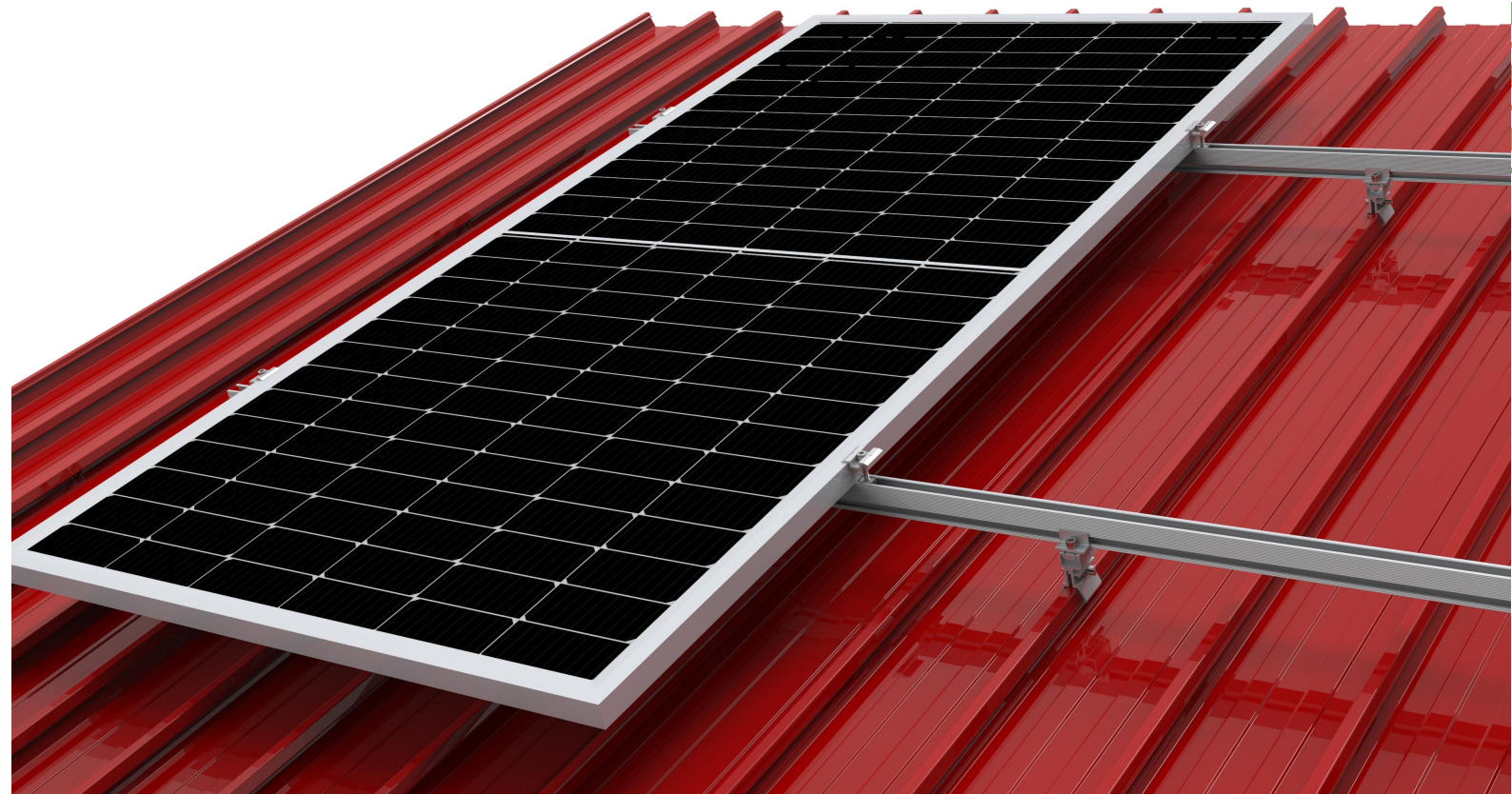


Middle clamp



End clamp

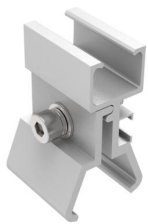
Rail system LV-M074



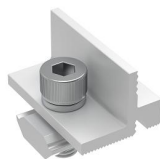
Mounting Rail



Rail connector



Roof clamp



Rail fastener



Middle clamp



End clamp



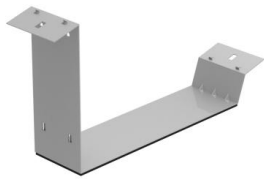
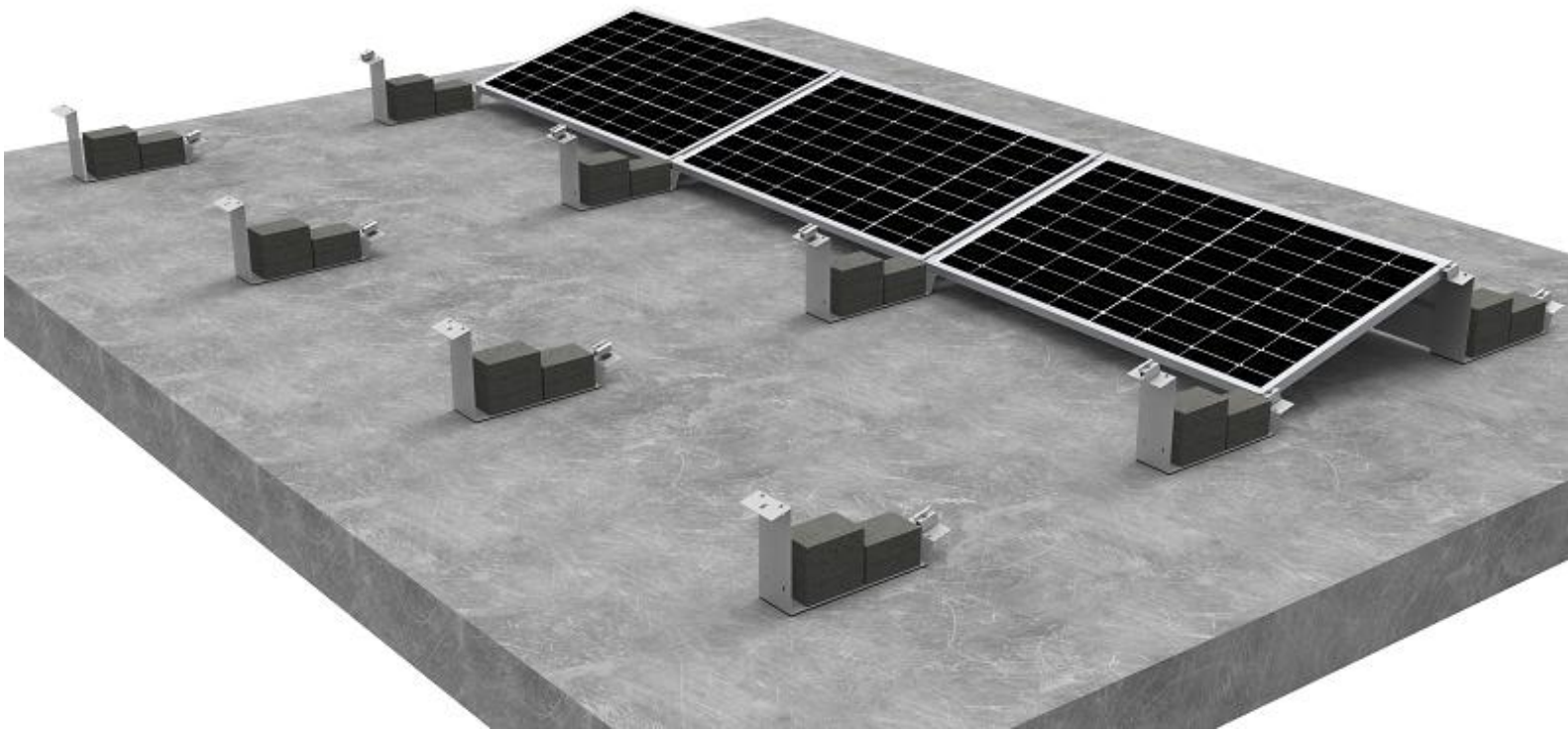
Ground lug

- **Application:**
Standing seam metal roof
- **Material:** Aluminum6005-T5, SS304
- **Module orientation:** Portrait
- **Module thickness:** 30~40mm
- **Module type:** Framed modules
- **Wind load:** 45m/s
- **Service life:** 25years
- **Warranty years:** 10 years

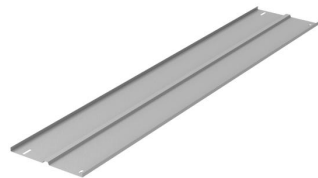


Flat roof mounting system

Z-bracket system LV-F061



Z bracket



Wind deflector



Middle clamp



End clamp



Ground lug

- **Application:**
Flat roof with foil, bitumen, gravel, green roof, metal, concrete, open spaces
- **Material:** ZM275 Magnelis
- **Module orientation:** South, West-east
- **Fixing:** Ballast blocks
- **Inclination:** 5° / 10° / 15° / 20°
- **Module type:** Framed modules
- **Building height:** 50 m max.
- **Roof inclination:** 5° max.
- **Wind load:** 40m/s
- **Service life:** 25years
- **Warranty years:** 10 years

Tripod system LV-F0621



- **Application:**
Flat roof with foil, bitumen, gravel, green roof, metal, concrete, open spaces
- **Material:** Aluminum 6005-T5, SS304
- **Module orientation:** landscape
- **Fixing:** Ballast blocks or screws
- **Inclination:** 10° / 15° /20°/25°/30°
- **Module type:** Framed modules
- **Building height:** 25 m max.
- **Roof inclination:** 5° max.
- **Wind load :**50m/s
- **Service life:** 25years
- **Warranty years:** 10 years



Tripod structure



Middle clamp



End clamp



Ballast rack /Expansion bolt



Ground lug

Tripod system LV-F0622



- **Application:**
Flat roof with foil, bitumen, gravel, green roof, metal, concrete, open spaces
- **Material:** Aluminum6005-T5, SS304
- **Module orientation:** Portrait
- **Fixing:** Ballast blocks /Screws
- **Inclination:** 10° / 15° /20°/25°/30°
- **Module type:** Framed modules
- **Building height:** 50 m max.
- **Roof inclination:** 5° max.
- **Wind load:**50m/s
- **Service life:** 25years
- **Warranty years:** 10 years



Tripod structure



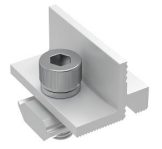
Rail



Middle clamp



End clamp



Rail fastener



Ballast rack /Expansion bolt



Ground lug

Tripod system LV-F0623



Middle clamp



End clamp



Expansion bolt



Ground lug

- **Application:**
Flat roof with foil, bitumen, gravel, green roof, metal, concrete, open spaces
- **Material:** Aluminum6005-T5, SS304
- **Module orientation:** landscape
- **Fixing:** screws
- **Inclination:** 10° / 15° /20°/25°/30°
- **Module type:** Framed modules
- **Building height:** 50 m max.
- **Roof inclination:** 5° max.
- **Wind load:** 50m/s
- **Service life:** 25 years
- **Warranty years:** 10 years

Tripod system LV-F0624



Rail



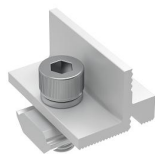
Middle clamp



End clamp



Expansion bolt



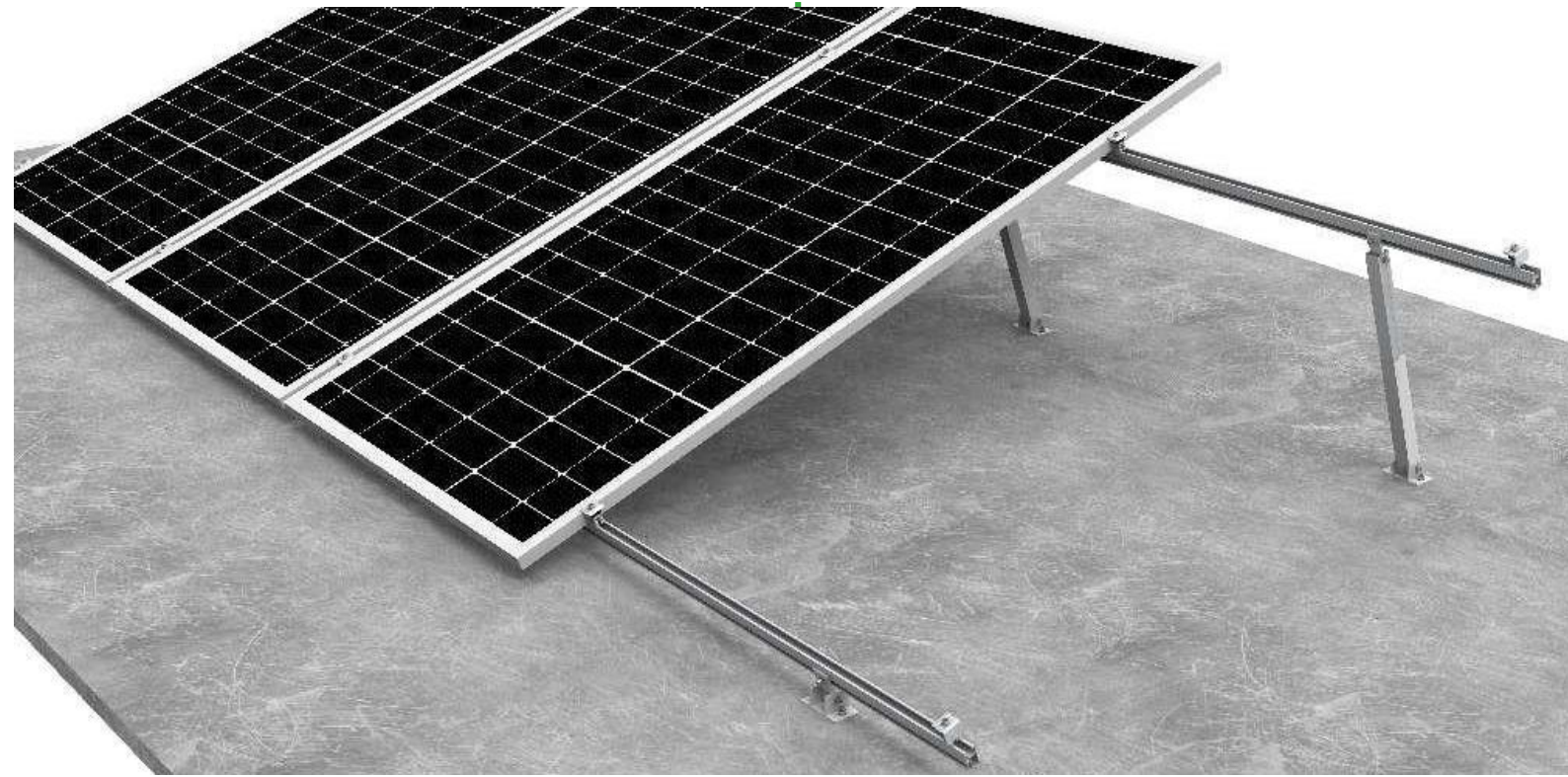
Rail fastener



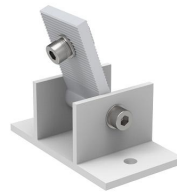
Ground lug

- **Application:**
Flat roof with foil, bitumen, gravel, green roof, metal, concrete, open spaces
- **Material:** Aluminum6005-T5, SS304
- **Module orientation:** Portrait
- **Inclination:** 10° / 15° /20°/25°/30°
- **Module type:** Framed modules
- **Building height:** 50 m max.
- **Roof inclination:** 5° max.
- **Wind load:** 50m/s
- **Service life:** 25 years
- **Warranty years:** 10 years

Adjustable system LV-F063



- **Application:**
Flat roof with foil, bitumen, gravel, green roof, metal, concrete, open spaces
- **Material:** Aluminum6005-T5, SS304
- **Module orientation:** Portrait
- **Inclination:** 10° ~20°/25°~40°
- **Module type:** Framed modules
- **Building height:** 25 m max.
- **Roof inclination:** 5° max.
- **Wind load:** 50 m/s
- **Service life:** 25 years
- **Warranty years:** 10 years



Front foot



Rear foot



Rail



Ground lug



Middle clamp



End clamp



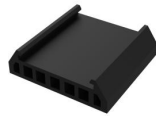
Collapsible rack



Ballast rack



Connector



EPDM base



Ground lug



Middle clamp



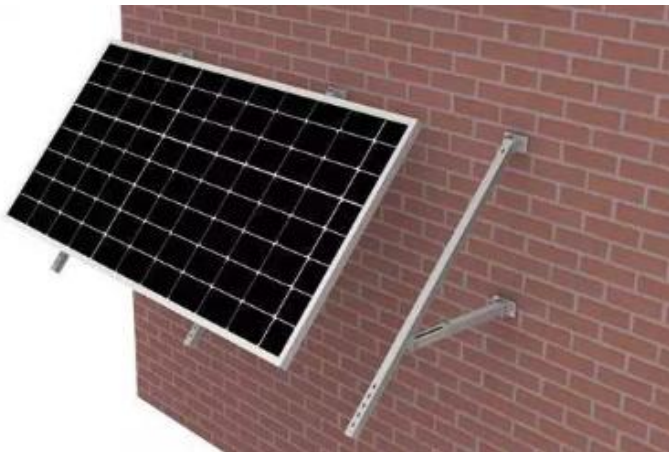
End clamp



Bolt for ballast rack

- **Application:**
Flat roof with foil, bitumen, gravel, green roof, metal, concrete, open spaces
- **Material:** Aluminum6005-T5, SS304
- **Module orientation:** South, West-east
- **Inclination:** 10°
- **Module type:** Framed modules
- **Building height:** 25 m max.
- **Roof inclination:** 5° max.
- **Wind load :** 50 m/s
- **Service life:** 25 years
- **Warranty years:** 10 years

Balcony mounting system LV-B09



Balcony structure



U fastener



Structure Fastener

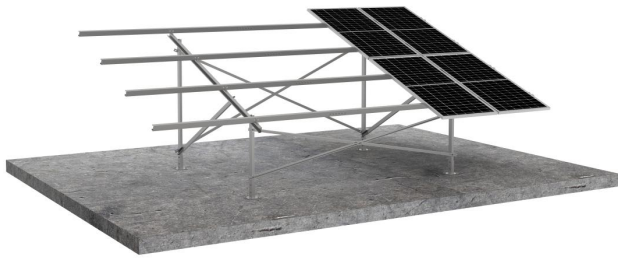


Fastener bolts

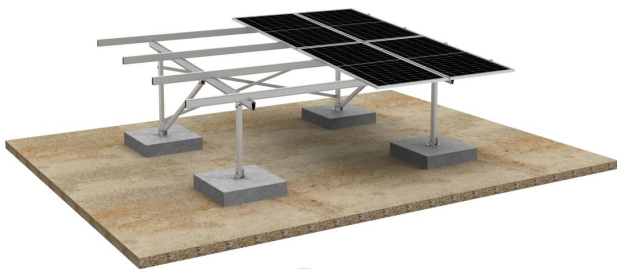
- **Application:** Balcony or wall
- **Material:** SS304, Aluminum6005-T5
- **Module orientation:** Landscape
- **Module type:** Framed
- **System size:** customized
- **Wind speed :**50 m/s
- **Warranty:** 10 years
- **Service life:** 30 years



Ground mounting system



- ✧ Model NO.: LV-G01
- ✧ Material: Steel Q235B with HDG or ZM310 Magnelis
- ✧ Module orientation: Landscape/ Portrait
- ✧ Foundation type: Concrete foundation/Ground screw/ Rammed post
- ✧ Wind speed: Up to 60m/s
- ✧ Tilt angles: 5° - 50°



- ✧ Model NO.: LV-G03
- ✧ Material: Aluminum 6005-T5
- ✧ Module orientation: Landscape/ Portrait
- ✧ Foundation type: Concrete foundation/Ground screw/ Rammed post
- ✧ Wind speed: Up to 45m/s
- ✧ Tilt angles: 5° - 50°



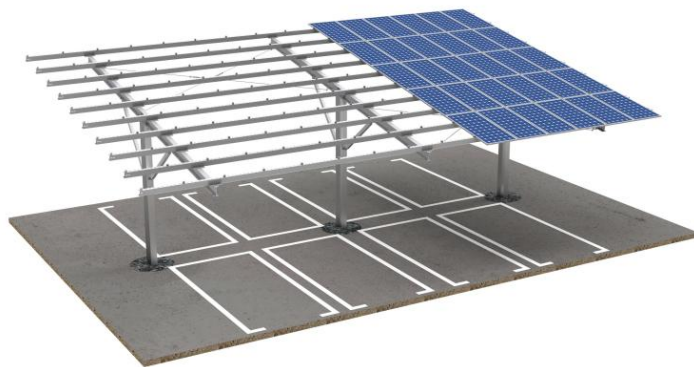
- ✧ Model NO.: LV-G15
- ✧ Material: Steel Q235B with HDG or ZM310 Magneli
- ✧ Module orientation: Landscape/ Portrait
- ✧ Foundation type: Concrete foundation/Ground screw/ Rammed post
- ✧ Wind speed: Up to 45m/s
- ✧ Tilt angles: 5° - 50°



- ✧ Model NO.: LV-G05
- ✧ Material: Steel Q235B with HDG or ZM310 Magnelis
- ✧ Module orientation: Landscape/ Portrait
- ✧ Foundation type: Concrete foundation/Ground screw/ Rammed post
- ✧ Wind speed: Up to 45m/s
- ✧ Tilt angles: 5° - 50°



- ✧ Model NO.: LV-G013-1
- ✧ Material: Steel Q235B with HDG
- ✧ Module orientation: Landscape/ Portrait
- ✧ Wind speed: Up to 45m/s
- ✧ Tilt angles: 0° - 15°
- ✧ Carport size: Customized
- ✧ Park space: Single sided



- ✧ Model NO.: LV-G13-2
- ✧ Material: Steel Q235B with HDG
- ✧ Module orientation: Landscape/ Portrait
- ✧ Wind speed: Up to 45m/s
- ✧ Tilt angles: 0° - 15°
- ✧ Carport size: Customized
- ✧ Park space: double sided



Roof mounting accessories

Solar Mounting rails & Rail splices



Roof rail **5801300**
Material : Aluminum 6005-T5
Color: Mill/Black
Max Length: 6200mm



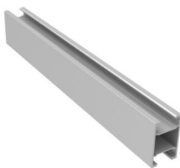
Roof rail **5801300H**
Material : Aluminum 6005-T5
Color: Mill/Black
Max Length: 6200mm



Roof rail **5801400**
Material : Aluminum 6005-T5
Color: Mill/Black
Max Length: 6200mm



Roof rail **5801400H**
Material : Aluminum 6005-T5
Color: Mill/Black
Max Length: 6200mm



Roof rail **5801500**
Material : Aluminum 6005-T5
Color: Mill/Black
Max Length: 6200mm



Rail splice **5801300-C**
Material : Stainless 304
Max Length: 200mm



Rail splice **5801300H-C**
Material : Stainless 304
Max Length: 200mm



Rail splice **5801400-C**

Material : Aluminum6005-T5 & SS304

Max Length: 200mm



Rail splice **5801400H-C**

Material : Aluminum6005-T5 & SS304

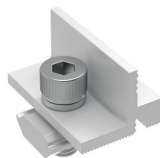
Max Length: 200mm



Rail splice **5801500-C**

Material : Aluminum6005-T5 & SS304

Max Length: 200mm



Rail fastener **7830201**

Material : Aluminum6005-T5 & SS304

Bolt: M8x20



Rail fastener **7820701**

Material : Aluminum6005-T5 & SS304

Bolt: M8x20

Solar Panel clamps



End clamp: **7817501**

Material : Aluminum 6005-T5

Color: Silver/Black

Module frame height: From 30mm up to 40mm



Mid clamp: **7817601**

Material : Aluminum 6005-T5

Color: Silver/Black

Module frame height: From 30mm up to 40mm



Mid clamp: 7817401
Material : Aluminum 6005-T5
Color: Silver/Black
Module frame height: From 30mm up to 40mm



End clamp: 7817301
Material : Aluminum 6005-T5
Color: Silver/Black
Module frame height: From 30mm up to 40mm



Mid clamp: 7816800-L
Material : Aluminum 6005-T5
Color: Silver
Module type: Thin film/Frameless module



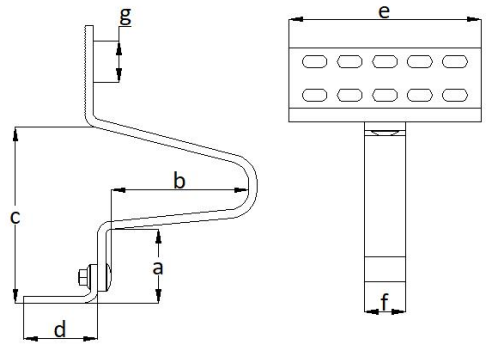
Mid clamp:
Product No.: 7816900-L
Material : Aluminum 6063-T5
Clamp length: 80mm



End clamp: 7817100-L
Material : Aluminum 6063-T5
Color: Silver
Module type: Thin film/Frameless module



End clamp: 7817200-L
Material : Aluminum 6063-T5
Color: Silver
Module type: Thin film/ Frameless module



Aluminum tile hook 7820501

Material : Aluminum 6063-T5

Screw: 2 pcs of M8x80 TX40

a	b	c	d	e	f	g
44	101	126	90	100	30	27



Tile Roof hook 7840042

Material : Stainless 304

Screw: 2 pcs of M8x80 TX40

a	b	c	d	e	f	g
50	104	125	50	180	30	30



Tile Roof hook 7840046

Material : Stainless 304

Screw: 2 pcs of M8x80 TX40

a	b	c	d	e	f	g
54	100	128	54	140	30	30

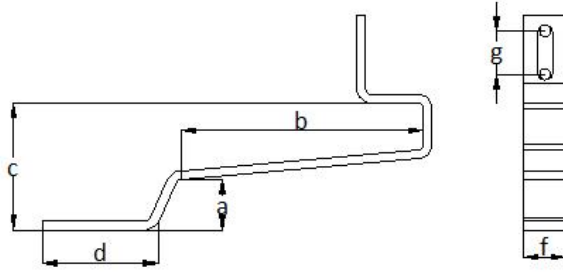


Tile Roof hook 7840047

Material : Stainless 304

Screw: 2 pcs of M8x80 TX40

a	b	c	d	e	f	g
48	100	118	54	140	30	30



Tile Roof hook 7840053

Material : Stainless 304

Screw: 2 pcs of M8x80 TX40

a	b	c	d	e	f	g
35	168	88	81	/	30	30



Tile Roof hook 7840054

Material : Stainless 304

Screw: 2 pcs of M8x80 TX40

a	b	c	d	e	f	g
/	/	39	250	/	30	30

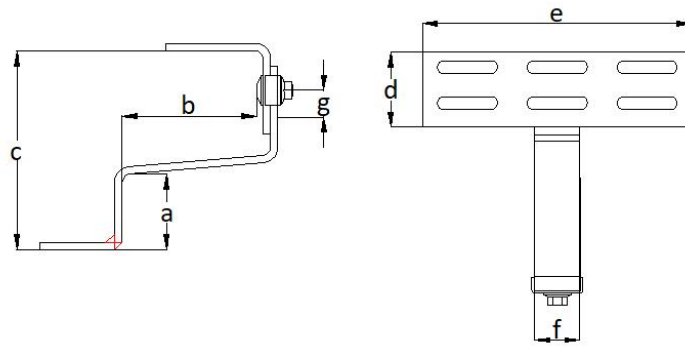


Tile Roof hook 7840057

Material : Stainless 304

Screw: 2 pcs of M8x80 TX40

a	b	c	d	e	f	g
44	110	95	120	/	150	30



Tile Roof hook 7840043

Material : Stainless 304

Screw: 2 pcs of M8x80 TX40

a	b	c	d	e	f	g
50	90	145	50	180	30	20

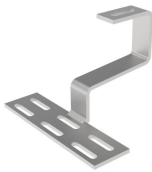


Tile Roof hook 7840048

Material : Stainless 304

Screw: 2 pcs of M8x80 TX40

a	b	c	d	e	f	g
54	86	149	54	140	30	20



Tile Roof hook 7840044

Material : Stainless 304

Screw: 2 pcs of M8x80 TX40

a	b	c	d	e	f	g
45	96	119	50	180	30	/

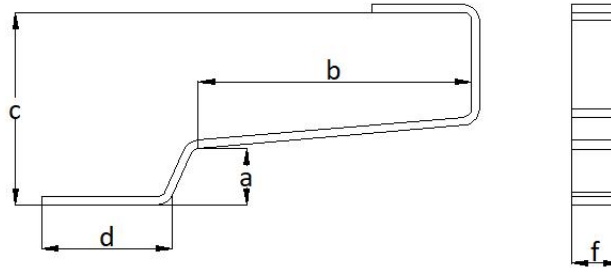


Tile Roof hook 7840049

Material : Stainless 304

Screw: 2 pcs of M8x80 TX40

a	b	c	d	e	f	g
49	91	123	54	140	30	/

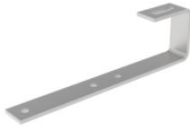


Tile Roof hook 7840051

Material : Stainless 304

Screw: 2 pcs of M8x80 TX40

a	b	c	d	e	f	g
35	169	119	81	/	30	/



Tile Roof hook 7840052

Material : Stainless 304

Screw: 2 pcs of M8x80 TX40

a	b	c	d	e	f	g
/	/	66	250	/	30	/

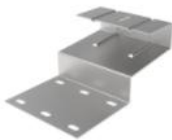


Aluminum tile hook: 7840055

Material : Stainless 304

Screw: 2 pcs of M8x80 TX40

a	b	c	d	e	f	g
34	231	116	52	/	75	/



Tile Roof hook: 7840056

Material : Stainless 304

Screw: 2 pcs of M8x80 TX40

a	b	c	d	e	f	g
44	110	95	120	/	150	/

Mini rail system



Mini Rail 5813401
Material : Aluminum 6005-T5
Color: Sliver/Black
Max Length: 100mm/customized
Pre-drilled with 4 holes for Screw ST5.5x25
bottom side fully covered with EPDM sealing tape



Mini Rail 5813501
Material : Aluminum 6005-T5
Color: Sliver/Black
Max Length: 300mm/400mm/customized
Pre-drilled with 2x6 holes for Screw ST5.5x25
Bottom side covered with two pieces of EPDM sealing tape



Mini Rail
Product No.: 5813601
Material : Aluminum 6005-T5
Color: Sliver/Black
Max Length: 120mm/customized
Pre-drilled with 4 holes for Screw ST5.5x25
Bottom side fully covered with EPDM sealing tape

Sheet metal seam clamp



Standing seam clamp 7810101
 Material : Aluminum 6005-T5
 Bolt: 1 pcs of M8x35
 Type of roofing: Double-fold standing seam
 Length: 45mm



Standing seam clamp 7810102
 Material :Aluminum 6005-T5
 Bolt: 2 pcs of M8x35
 Type of roofing: Double-fold standing seam
 Length: 100mm



Standing seam clamp 7810201
 Material : Aluminum 6005-T5
 Bolt: 1 pcs of M8x35
 Type of roofing: Check the detailed size
 Length: 45mm



Standing seam clamp 7810201
 Material : Aluminum 6005-T5
 Bolt: 2 pcs of M8x35
 Type of roofing: Check the detailed size
 Length: 100mm



Standing seam clamp 7810301
 Material : Aluminum 6005-T5
 Bolt: 1 pcs of M8x35
 Type of roofing: Check the detailed size
 Length: 45mm



Standing seam clamp 7810302
 Material : Aluminum 6005-T5
 Bolt: 2 pcs of M8x35
 Type of roofing: Check the detailed size
 Length: 100mm



Standing seam clamp 7810401
Material : Aluminum 6005-T5
Bolt: 1 pcs of M8x35
Type of roofing: Double-fold standing seam
Length: 45mm



Standing seam clamp 7810402
Material : Aluminum 6063-T5
Bolt: 2 pcs of M8x35
Type of roofing: Double-fold standing seam
Length: 100mm



Standing seam clamp 7810501
Material :Aluminum 6005-T5
Bolt: 1 pcs of M8x35
Type of roofing: check the detailed size
Length: 45mm



Standing seam clamp 7810502
Material :Aluminum 6005-T5
Bolt: 2 pcs of M8x35
Type of roofing:check the detailed size
Length: 100mm



Standing seam clamp 7810601
Material : Aluminum 6005-T5
Bolt: 1 pcs of M8x35
Type of roofing: Diamond shape
Length: 45mm



Standing seam clamp 7810602
Material : Aluminum 6005-T5
Bolt: 2 pcs of M8x35
Type of roofing: Diamond shape
Length: 100mm



Standing seam clamp 7810701
Material : Aluminum 6005-T5
Bolt: 1 pcs of M8x35
Type of roofing:RIB-ROOF Evolution ; Kalzip
Length: 45mm



Standing seam clamp 7810702
Material : Aluminum 6005-T5
Bolt: 2 pcs of M8x35
Type of roofing: RIB-ROOF Evolution ; Kalzip
Length: 100mm



Standing seam clamp 7810801
Material : Aluminum 6005-T5
Bolt: 1 pcs of M8x35
Type of roofing: check the detailed size
Length: 45mm



Standing seam clamp 7810802
Material : Aluminum 6005-T5
Bolt: 2 pcs of M8x35
Type of roofing:check the detailed size
Length: 100mm



Standing seam clamp 7810901
Material : Aluminum 6005-T5
Bolt: 1 pcs of M8x35
Type of roofing: RIB-ROOF 465Length: 45mm



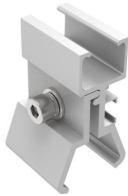
Standing seam clamp 7810902
Material : Aluminum 6005-T5
Bolt: 2 pcs of M8x35
Type of roofing: RIB-ROOF 465
Length: 100mm



Standing seam clamp 7811001
Material : Aluminum 6005-T5
Bolt: 1 pcs of M8x35
Type of roofing: KLIP-LOK 406
Length: 45mm



Standing seam clamp 7811002
Material : Aluminum 6005-T5
Bolt: 2 pcs of M8x35
Type of roofing: KLIP-LOK 406
Length: 100mm



Standing seam clamp 7811101
Material : Aluminum 6005-T5
Bolt: 1 pcs of M8x35
Type of roofing: KLIP-LOK 700
Length: 45mm



Standing seam clamp 7811102
Material : Aluminum 6005-T5
Bolt: 2 pcs of M8x35
Type of roofing: KLIP-LOK 700
Length: 100mm



Standing seam clamp 7811201
Material : Aluminum 6005-T5
Bolt: 1 pcs of M8x35
Type of roofing: Rib-Roof Speed 500
Length: 45mm



Standing seam clamp 7811202
Material : Aluminum 6005-T5
Bolt: 2 pcs of M8x35
Type of roofing: Rib-Roof Speed 500
Length: 100mm



Standing seam clamp 7811301
 Material : Aluminum 6005-T5
 Bolt: 1 pcs of M8x35
 Type of roofing: Double-fold standing seam
 Length: 45mm



Standing seam clamp 7811302
 Material : Aluminum 6005-T5
 Bolt: 2 pcs of M8x35
 Type of roofing: Double-fold standing seam
 Length: 100mm

Hanger bolt for wood substructure



Hanger bolt with L foot **7820107**
 Material of Hanger bolt : Stainless steel 304
 Material of L foot: Aluminum 6005-T5
 Size of Hanger bolt: M10*150/200/250



Hanger bolt with Steel plate **7840036**
 Material of Hanger bolt : Stainless steel 304
 Material of steel plate: Stainless steel 304
 Size of Hanger bolt: M10*150/200/250
 Size of Steel Plate: 30x100x5



Hanger bolt with Aluminum clamp **7820101**
 Material of Hanger bolt : Stainless steel 304
 Material of rail clamp: Aluminum 6005-T5
 Size of Hanger bolt: M10*150/200/250

Drill screw for steel substructure



L foot bracket **7820101**
 Material : Aluminum 6005-T5
 Material of Tail screw: Stainless steel 410
 Size of rail faster bolt: M8x20
 Size of Tail screw: ST6.3x60, ST6.3x150



L foot bracket **7821201**
 Material of L foot : Aluminum 6005-T5
 Material of Tail screw: Stainless steel 410
 Size of rail faster bolt: M8x20
 Size of Tail screw: ST6.3x60, ST6.3x150



L foot bracket **7821301**
 Material of L foot : Aluminum 6005-T5
 Material of Tail screw: Stainless steel 410
 Size of rail faster bolt: M8x20
 Size of Tail screw: ST6.3x60, ST6.3x150

Bolts and screws

Allen bolt



M8	SS304	different length
M10	SS304	different length

Hexagon head bolt



M10	SS304	different length
M12	SS304	different length
M16	SS304	different length

T-bolt



M8	SS304	different length
M10	SS304	different length

Hex nuts



M8	SS304
M10	SS304
M12	SS304

Flange nut with locking teeth



M8	SS304
M10	SS304
M12	SS304

T- nut



M8	SS304
M10	SS304

Flat washer



M8	SS304
M10	SS304

Spring washer



M8	SS304
M10	SS304

Self-drilling screw



ST5.5	SS410
ST6.3	SS410

Sheet metal screw



ST5.5*25	SS410
ST6.3*25	SS304

Torx head wooden screw



M8*75	SS304
M8*100	SS304

Hex head wooden screw



M8*75	SS304
M8*100	SS304

Accessories

Grounding lug



Aluminum 6005-T6

Two Cable clip



SS304

Four Cable clip



SS304

End cap



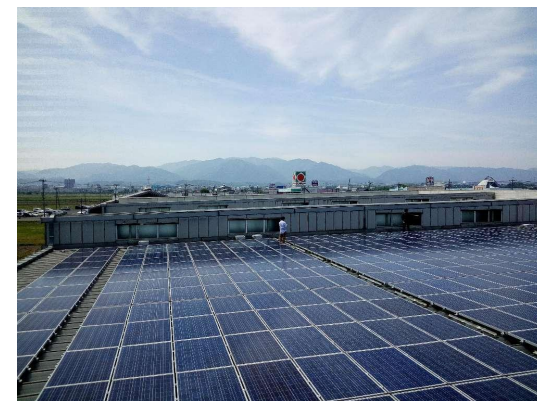
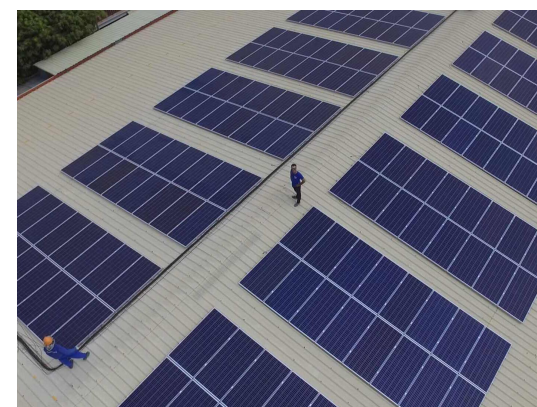
#3800916	PA6
#3800917	PA6
#3800918	PA6
#3800919	PA6

Production and packing



Give me a pivot, I can prize up the earth.

Project reference





Address: Building 2nd, No. 6, Park 5 Road, Yanguan Town Haining City Zhejiang Province

Tel: +86(0)573 87788269

Fax: +86(0877)81315

Email: info@leversolar.com

Web: www.leversolar.com